



JAIPUR ENGINEERING COLLEGE
AND RESEARCH CENTRE


Jaipur Engineering college and research
centre, Shri Ram ki Nangal, via Sitapura
RIICO Jaipur- 302 022.

Academic year-2019-20

STUDENT'S HOSTEL FACILITY FEEDBACK

TOTAL RESPONSE - 142

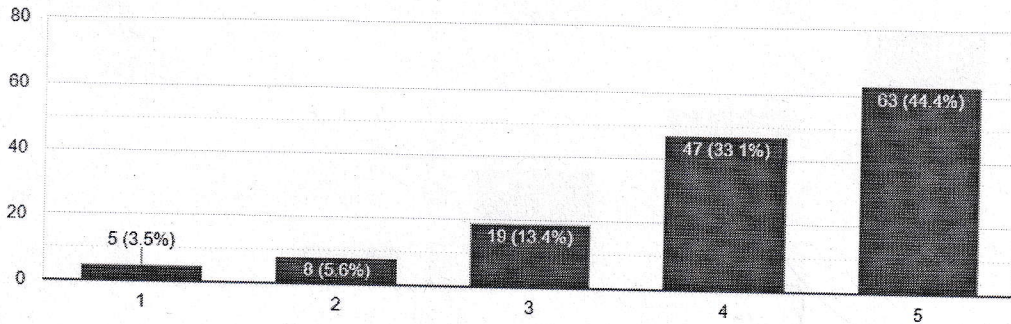
| STUDENT'S HOSTEL FACILITY FEEDBACK | | | | | |
|------------------------------------|----|----|----|----|----|
| | 1 | 2 | 3 | 4 | 5 |
| 1 | 5 | 8 | 19 | 47 | 63 |
| 2 | 11 | 19 | 19 | 44 | 49 |
| 3 | 10 | 18 | 30 | 35 | 49 |
| 4 | 4 | 9 | 27 | 42 | 60 |
| 5 | 28 | 15 | 16 | 34 | 49 |
| 6 | 11 | 14 | 26 | 39 | 52 |
| 7 | 19 | 14 | 19 | 40 | 50 |
| 8 | 13 | 12 | 18 | 38 | 61 |


Head of the Department
Mechanical Engineering
JECRC, Jaipur



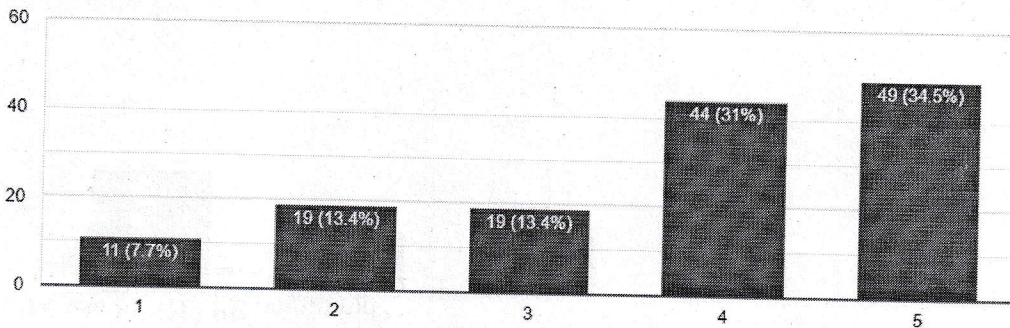
To what extent you agree that hostel surroundings are secure.

142 responses



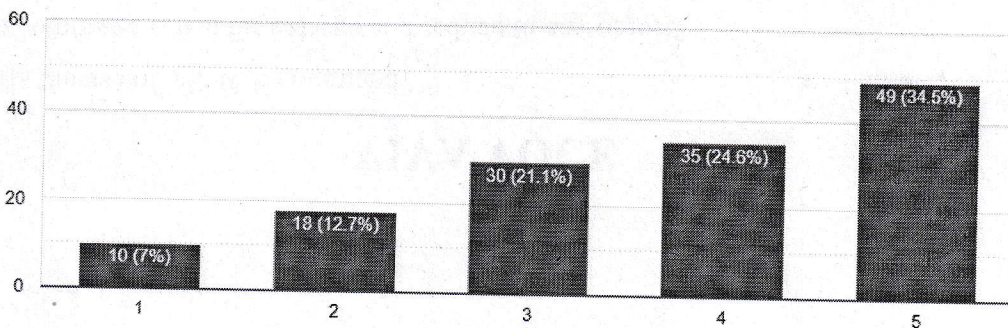
To what extent the cleanliness of kitchen and dining space are properly taken care of.


142 responses



To what extent you agree that food in the mess is served fresh.

142 responses

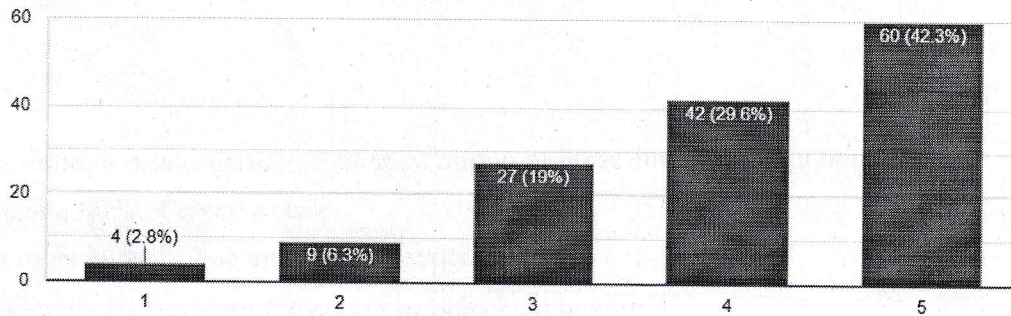



Head of the Department
Mechanical Engineering
JECRC, Jaipur



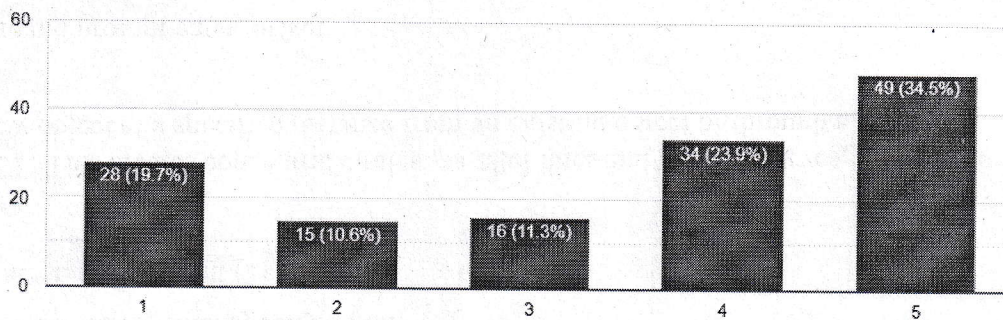
To what extent you agree that timings of mess are properly maintained.

142 responses



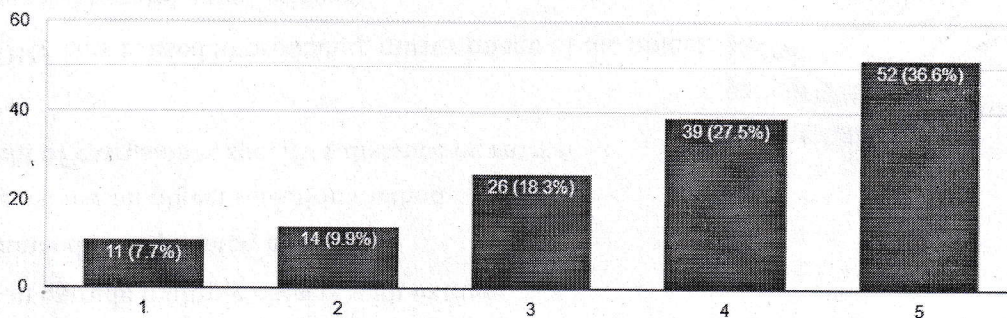
To what extent the Wi-Fi facility is available in the hostel campus.


142 responses



How would you rate the cooperativeness and accessibility of hostel staff?

142 responses




Head of the Department
Mechanical Engineering
JECRC, Jaipur



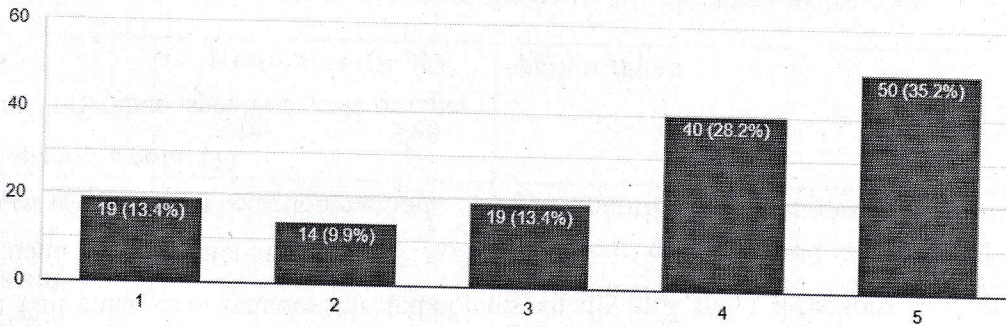
JAIPUR ENGINEERING COLLEGE
AND RESEARCH CENTRE

Jaipur Engineering college and research
centre, Shri Ram ki Nangal, via Sitapura
RIICO Jaipur- 302 022.

Academic year-2019-20

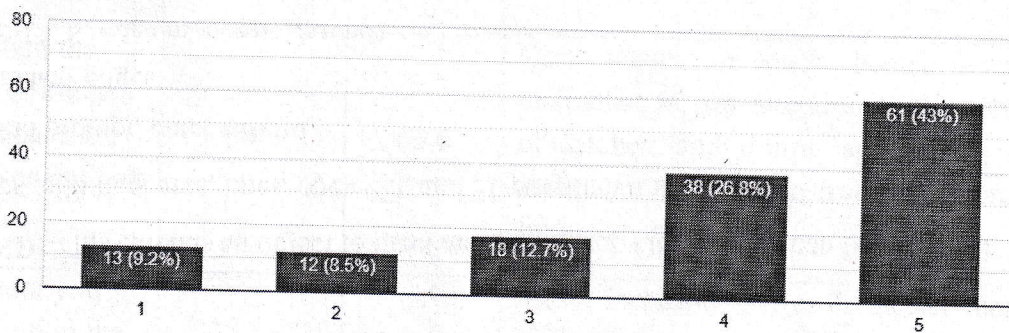
How would you rate the menu is properly displayed?


142 responses



How would you rate Do's and Don'ts are displayed?

142 responses




Head of the Department
Mechanical Engineering
JECRC, Jaipur



JAIPUR ENGINEERING COLLEGE
AND RESEARCH CENTRE

Jaipur Engineering college and research
centre, Shri Ram ki Nangal, via Sitapura
RIICO Jaipur- 302 022.

Academic year-2019-20

Student's Hostels Feedback forms received from students and summary as follows

| Parameters | Responses (in %) | | Action taken |
|--|------------------|------|---|
| | <60 | ≥60 | |
| To what extent you agree that hostel surroundings are secure. | 22.5 | 77.5 | The majority of the students agree with this statement as they find a safe and secure environment in the hostel. Also, this issue has been discussed with campus security incharge and he has been instructed to increase the security. |
| To what extent the cleanliness of kitchen and dining space are properly taken care of. | 34.5 | 65.5 | Care takers of each hostel have been instructed to pay attention to the cleanliness of kitchen and dining space. Also, hostel audit team has been instructed to increase the frequency of audit. |
| To what extent you agree that food in the mess is served fresh. | 40.8 | 59.2 | Mess incharge of each hostel has been instructed to maintain the quality of food. Also, hostel audit team has been instructed to increase the frequency of audit. |
| To what extent you agree that timings of mess are properly maintained. | 28.2 | 71.8 | The students appreciate the timely management of food and the service. Also, Mess incharge of each hostel has been instructed to maintain the timing of mess. |
| To what extent the Wi-Fi facility is available in the hostel campus. | 41.5 | 58.5 | This is a major concern area for enhancing the Wi-Fi facility in the hostel. This issue has been communicated to the concerned official and asked to install more routers in the hostel. |
| How would you rate the cooperativeness and accessibility of hostel staff? | 35.9 | 64.1 | Care taker of each hostel was instructed to be accessible for 24*7 and to cooperate more with the resident. |

Head of the Department
Mechanical Engineering
JEEEC, Jaipur




JAIPUR ENGINEERING COLLEGE
AND RESEARCH CENTRE

Jaipur Engineering college and research
centre, Shri Ram ki Nangal, via Sitapura
RIICO Jaipur- 302 022.

Academic year-2019-20

| | | | |
|--|------|------|--|
| How would you rate the menu is properly displayed? | 36.6 | 63.4 | The menu has been displayed at different places in hostel mess. Also, mess incharge was instructed to display menu properly at different places in hostel mess. |
| How would you rate Do's and Don'ts are displayed? | 30.3 | 69.7 | The Do's and Don't List are displayed everywhere in the hostel premise. Also, care taker was instructed to display and maintain the Do's and Don't list properly at different places in hostel premises. |


Head of the Department
Mechanical Engineering
JECRC, Jaipur