
 <p data-bbox="228 212 495 247">JAIPUR ENGINEERING COLLEGE AND RESEARCH CENTRE</p>	<p data-bbox="537 100 1206 132">Jaipur Engineering College and Research Centre</p> <p data-bbox="594 151 1149 182">Shri Ram ki Nangal, via Sitapura RIICO</p> <p data-bbox="764 207 979 239">Jaipur- 302022.</p>	<p data-bbox="1260 144 1463 212">Academic year 2022-2023</p>
---	---	---

We have taken online Student Satisfaction Survey (SSS) about the overall institutional performance of the college. The questionnaire of SSS contains of 21 questions. For this SSS 2560 students responded. The analysis of responses is as follows:

Parameters	Responses (In %)		Action taken
	<85	≥85	
How much of the syllabus was covered in the class?	300	2260	More than 85% of syllabus is covered by faculty members.
How well did the teachers prepare for the classes?	250	2310	Analysis shows that teachers come thoroughly prepared in their classes. Topics are explained with examples as well as when required repeated also as per student's request.
How well were the teachers able to communicate?	220	2340	Teachers have very good communication skills and are very properly able to communicate with students and all as per feedback.
Teacher's approach to teaching can best be described as	288	2272	Majority of students agree that teacher's approach to teaching is very good.
Fairness of the internal evaluation process by the teachers.	318	2242	Greater number of students says that fairness is there in internal evaluation process also assignments are given to slow students.
Was your performance in assignments discussed with you?	222	2238	Every time after assignments performance is discussed and analyzed and students agree with this.
The institute takes active interest in promoting internship, student exchange, field visit opportunities for students.	293	2267	Majority agreed that the institute takes active interest in promoting internship, student exchange, field visit opportunities for students.
The teaching and mentoring process in your institution facilitates you in cognitive, social and emotional growth.	395	2165	Maximum students feel that the teachers satisfactorily aid and help in providing a holistic development through the mentoring system and proper guidance.
The institution provide multiple opportunities to learn and grow	258	2302	Strongly agreed with more than 90% students.
Teachers inform you about your expected competencies, course outcomes and programme outcomes.	260	2300	Every time after internal exams marks are displayed on notice boards and students are made aware and they agree in majority about this.
Your mentor does a necessary follow – up with an assigned task to you	300	2260	Majority of mentors take necessary follow up with students.

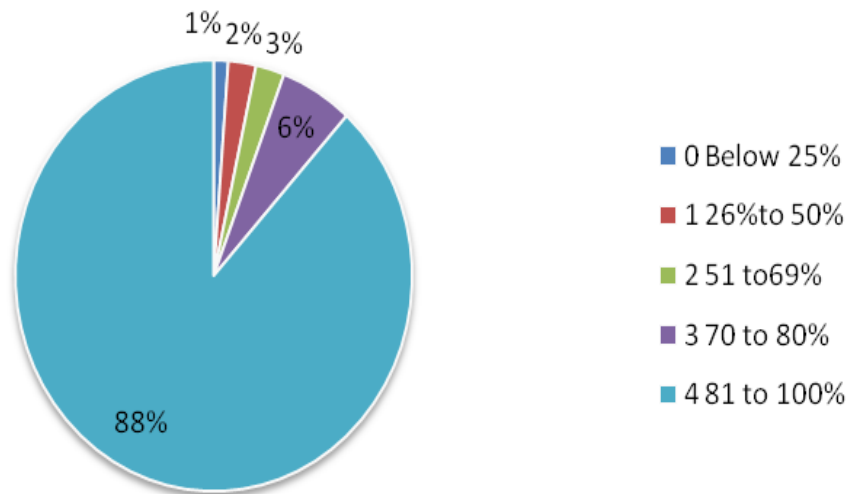

 PRINCIPAL
 Jaipur Engineering College &
 Research Centre
 Sitapura Road, Jaipur-302022

 JAIPUR ENGINEERING COLLEGE AND RESEARCH CENTRE	Jaipur Engineering College and Research Centre Shri Ram ki Nangal, via Sitapura RIICO Jaipur- 302022.	Academic year 2022-2023
--	--	--

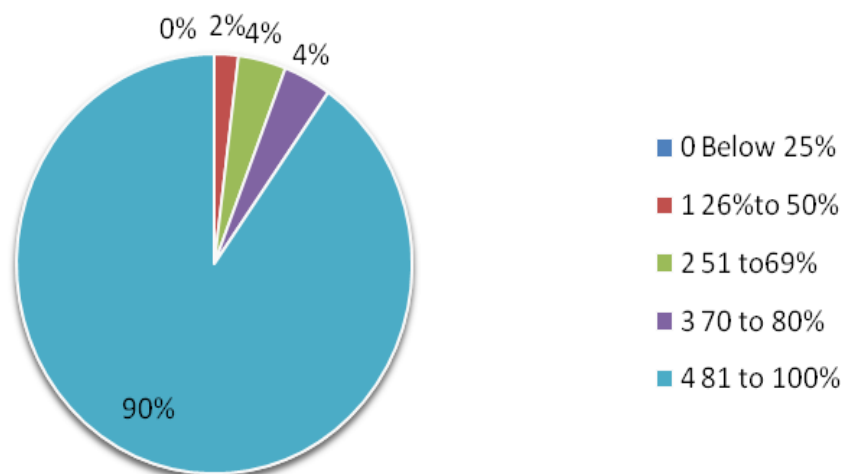
Parameters	Responses (In %)		Action taken
	<85	≥85	
The teachers illustrate the concept through with examples and applications.	310	2250	Analysis shows that teachers come thoroughly prepared in their classes. Topics are explained with examples as well as when required repeated also as per student's request. Teachers notes and PPTs are also shared with students.
The teachers identify your strengths and encourage you with providing right level of challenges.	360	2200	Class coordinators interact with students and analyze them. From MTTs also slow and advanced learners are identified. Accordingly faculty members and club coordinators motivate and guide students.
Teachers are able to identify your weakness and help you to overcome them.	290	2270	From MTTs also slow and advanced learners are identified. Accordingly assignments, remedial classes, mentoring, and guided.
The institution makes effort to engage students in the monitoring, review and continuous quality improvement of the teaching learning process	320	2240	From faculty feedback, subject feedback and feedback is also taken after every technical and non technical event. Necessary actions are taken and implemented to improve teaching learning process.
The student/teachers use student centric method such as experiential learning, participative learning and problem solving methodologies for enhances learning	220	2240	Institute has set incubation centre JIC,MOUs, Industrial visits, Lab facilities.
Teachers encourage you to participate in extracurricular activities.	393	2167	Class Coordinators circulate message regarding activities and encourage them to participate to make their resume strong and inculcate characteristics like team work, leadership skills and managerial skills.
Efforts are made by the institute/teachers to inculcate to soft skills, life skills and employability skills to make you ready for the world to work.	300	2260	From first year onwards students are encouraged to participate in various events that helps to increase their skills. From 3 rd year onwards campus recruitment training (CRT) is given to students which consist of many phases of soft skills like GD, interview, extempore and also technical interview.
What percentage of teachers use ICT Tools such as LCD projectors, Multimedia etc.	258	2302	On website notes, video lecture, lab video and ppts are available for students. All faculty members used ICT Tools.
The overall quality of teaching learning process in your institute is very good.	358	2202	Student gets placed in good companies with good package, some pursue further study also, and average package and average result is increases every year.


 PROVICE
 Jaipur Engineering College &
 Research Centre
 Sitapura, Jaipur-302022

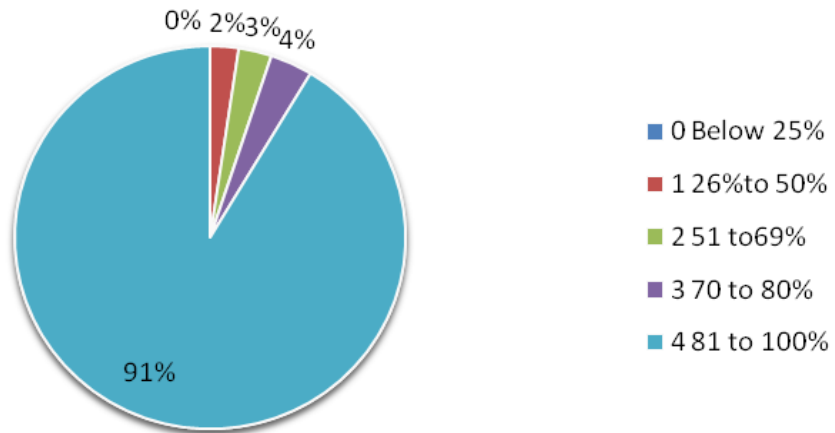
1. How much of the syllabus was covered in the class?



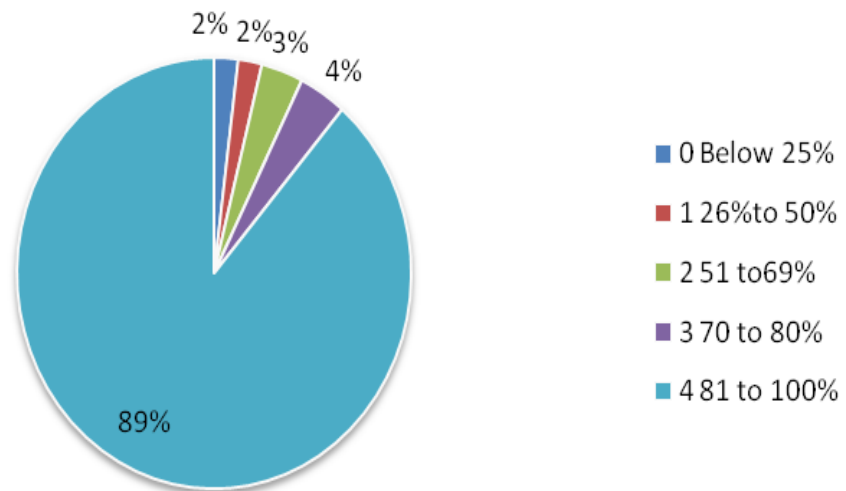
2. How well did the teachers prepare for the classes?



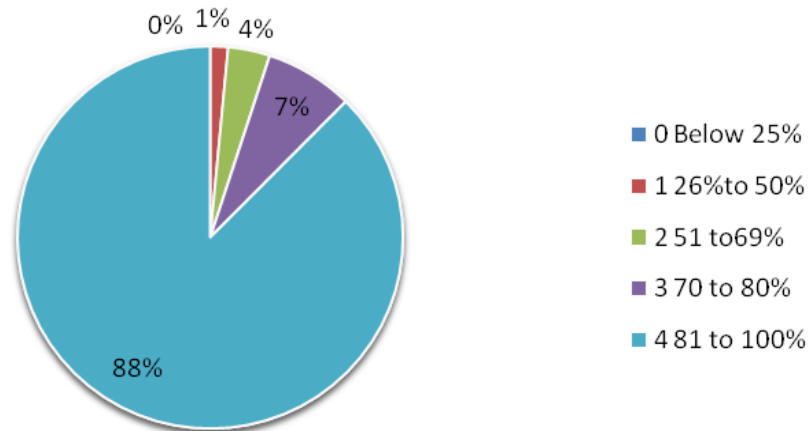
3. How well did the teachers prepare for the classes?



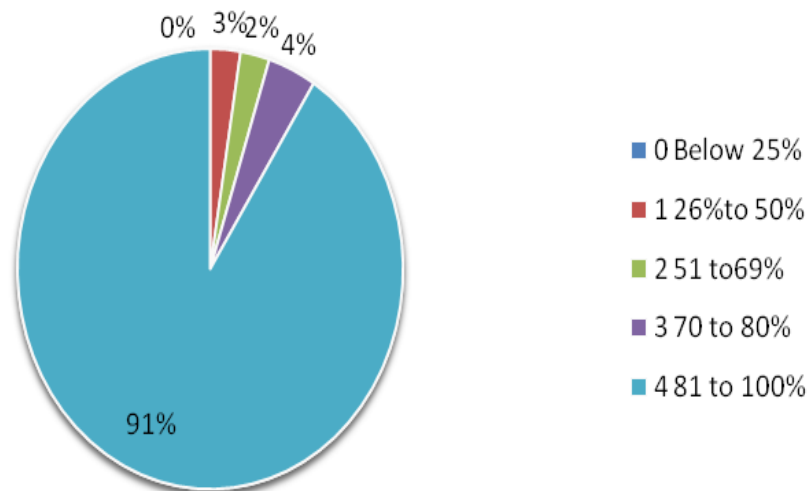
4. The teacher's approach to teaching can best be described as



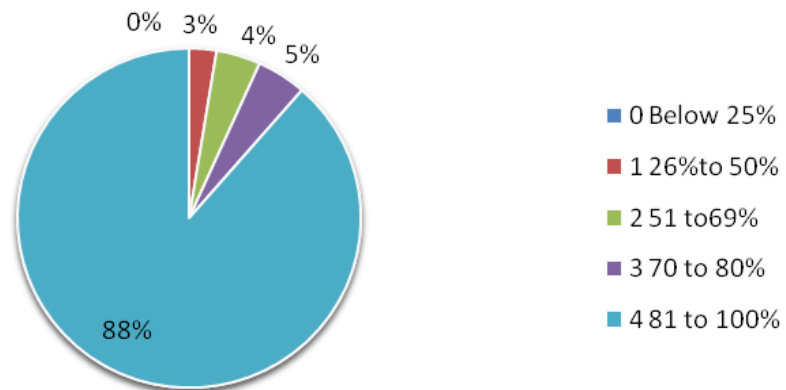
**5. Fairness of the internal evaluation process
by the teachers.**



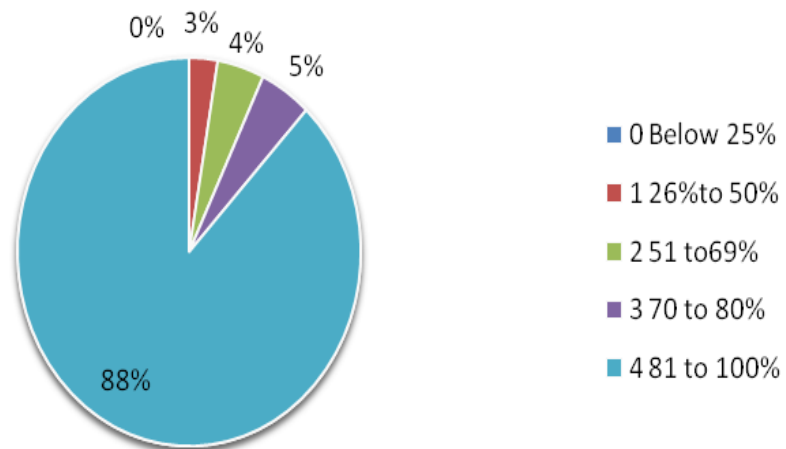
**6. Was your performance in assignments
discussed with you?**



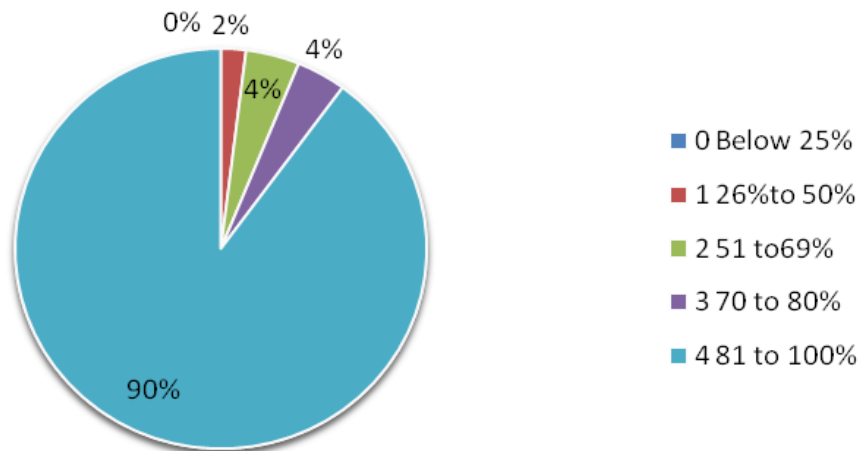
7. The teaching and mentoring process in your institution facilitates you in cognitive, social and emotional growth.



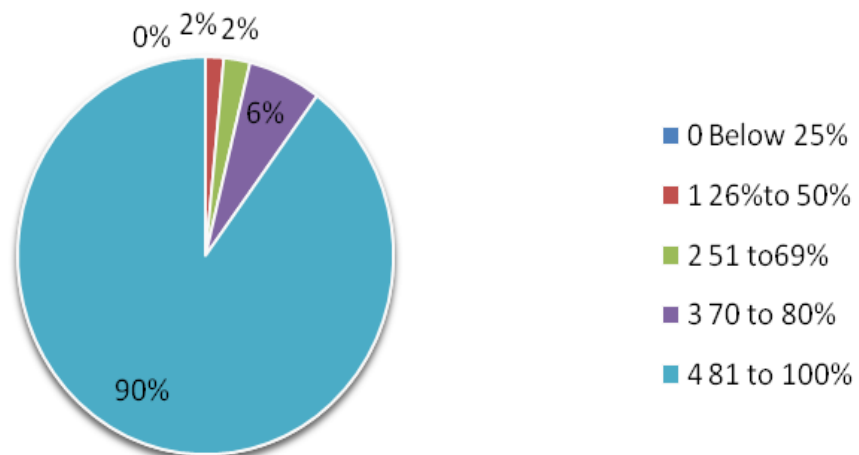
8. The institute takes active interest in promoting internship, student exchange, field visit opportunities for students.



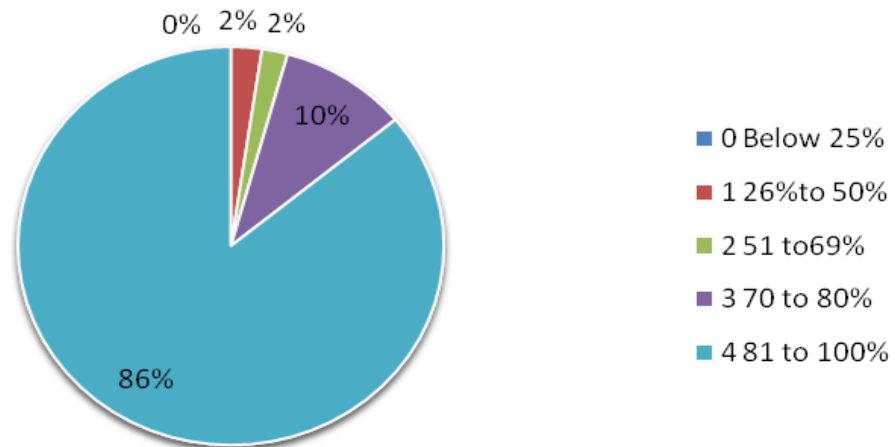
9. The institution provide multiple opportunities to learn and grow



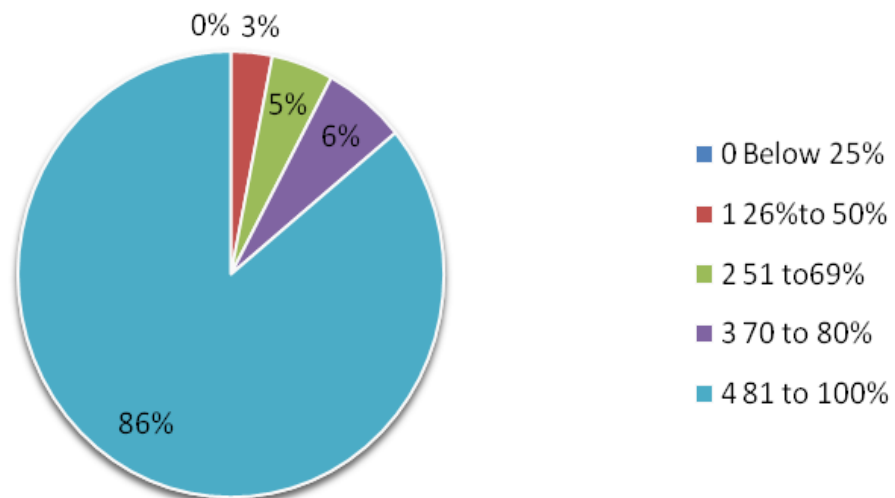
10. Teachers inform you about your expected competencies, course outcomes and programme outcomes.



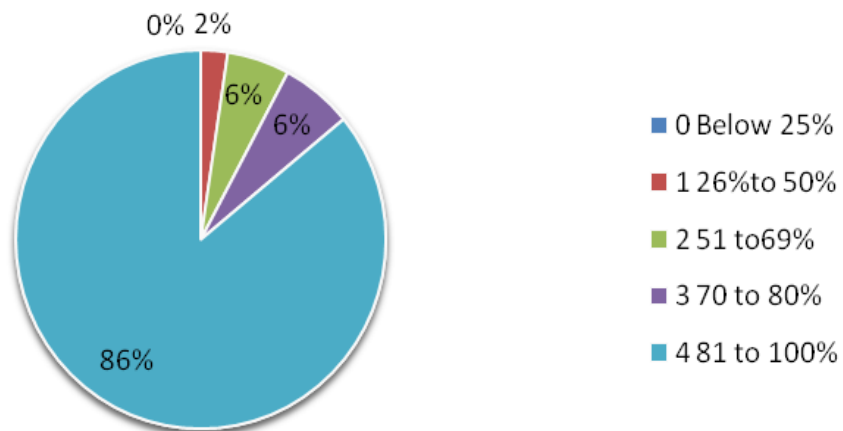
**11. Your mentor does a necessary follow –up
with an assigned task to you**



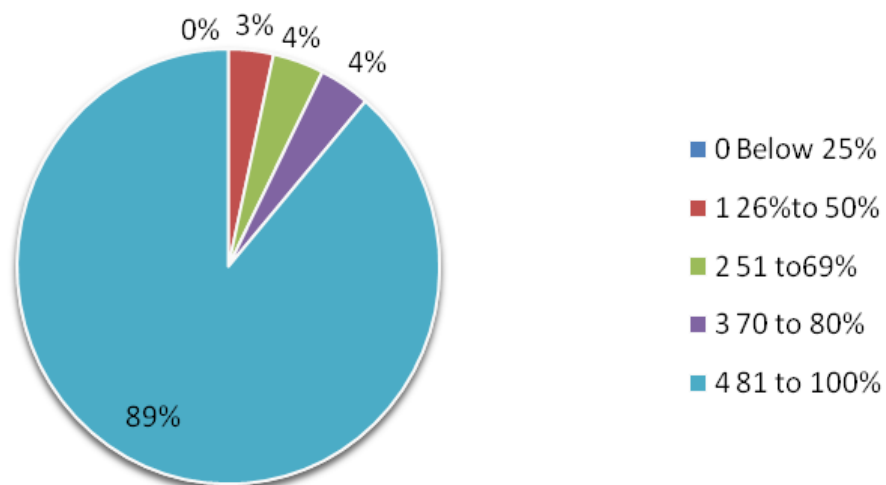
**12. The teachers illustrate the concept through
with examples and applications.**



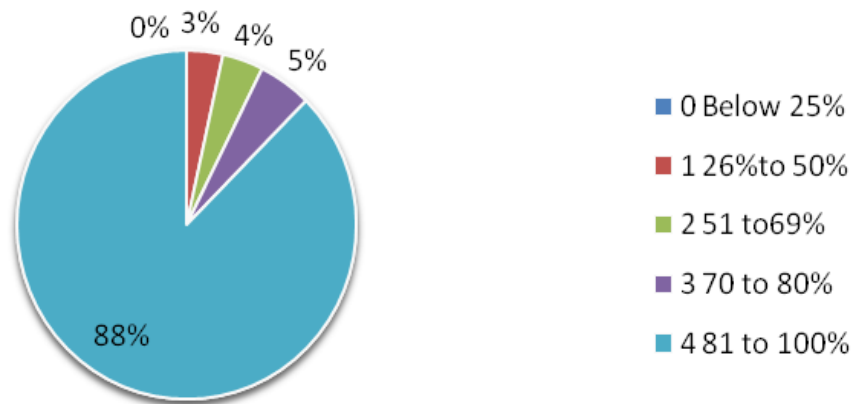
13. The teachers identify your strengths and encourage you with providing right level of challenges.



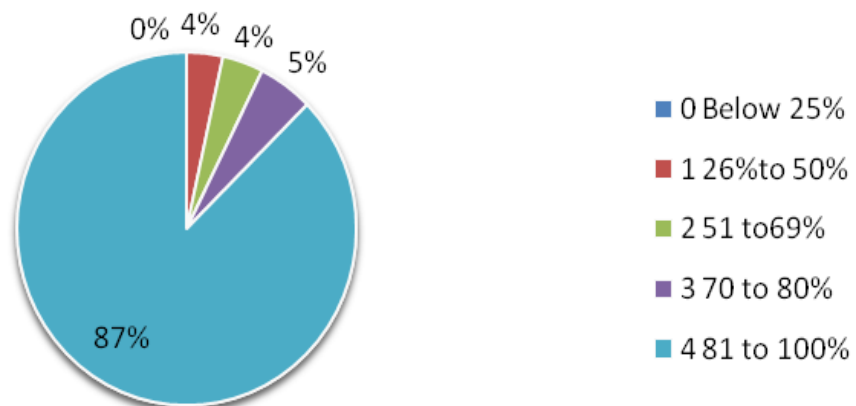
14. Teachers are able to identify your weakness and help you to overcome them.



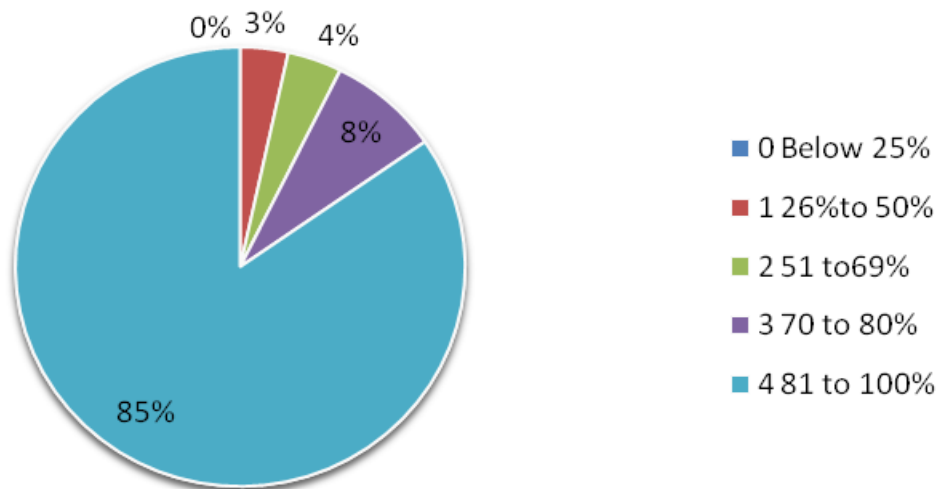
15. The institution makes effort to engage students in the monitoring, review and continuous quality improvement of the teaching learning process



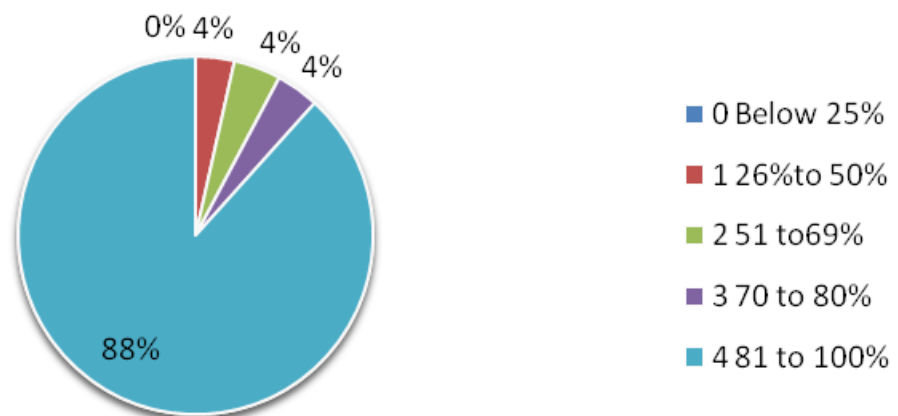
16. The student/teachers use student centric method such as experiential learning, participative learning and problem solving methodologies for enhances learning



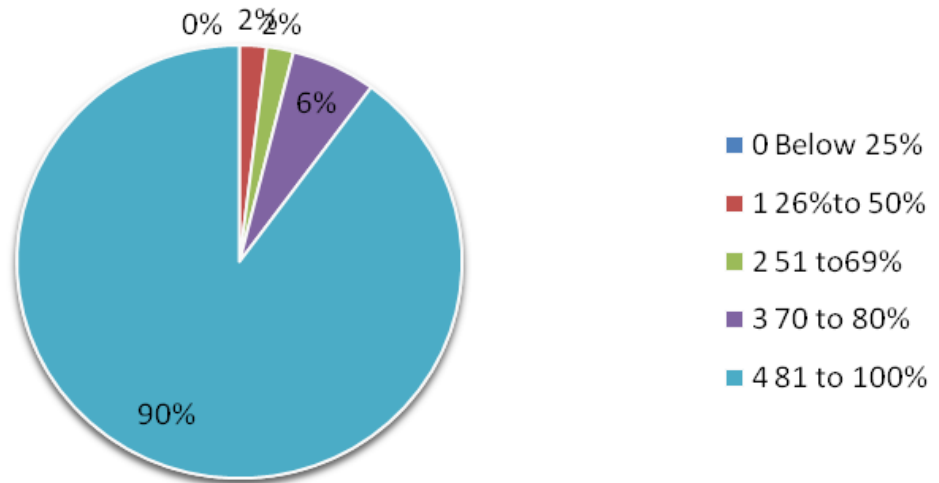
17. Teachers encourage you to participate in extracurricular activities.



18. Efforts are made by the institute/teachers to inculcate soft skills, life skills and employability skills to make you ready for the world to work.



19. What percentage of teachers use ICT Tools such as LCD projectors, Multimedia etc.



20. The overall quality of teaching learning process in your institute is very good.

